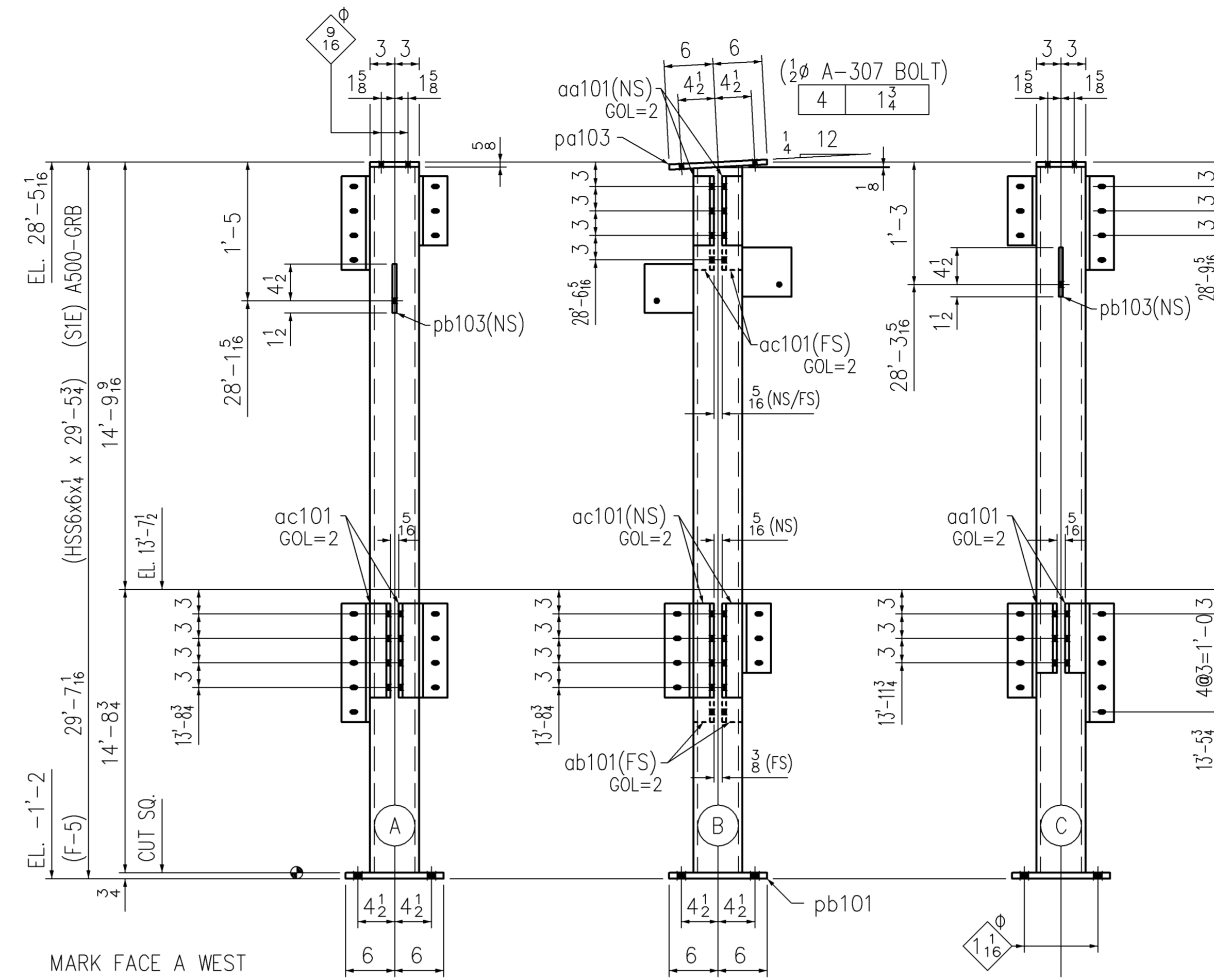
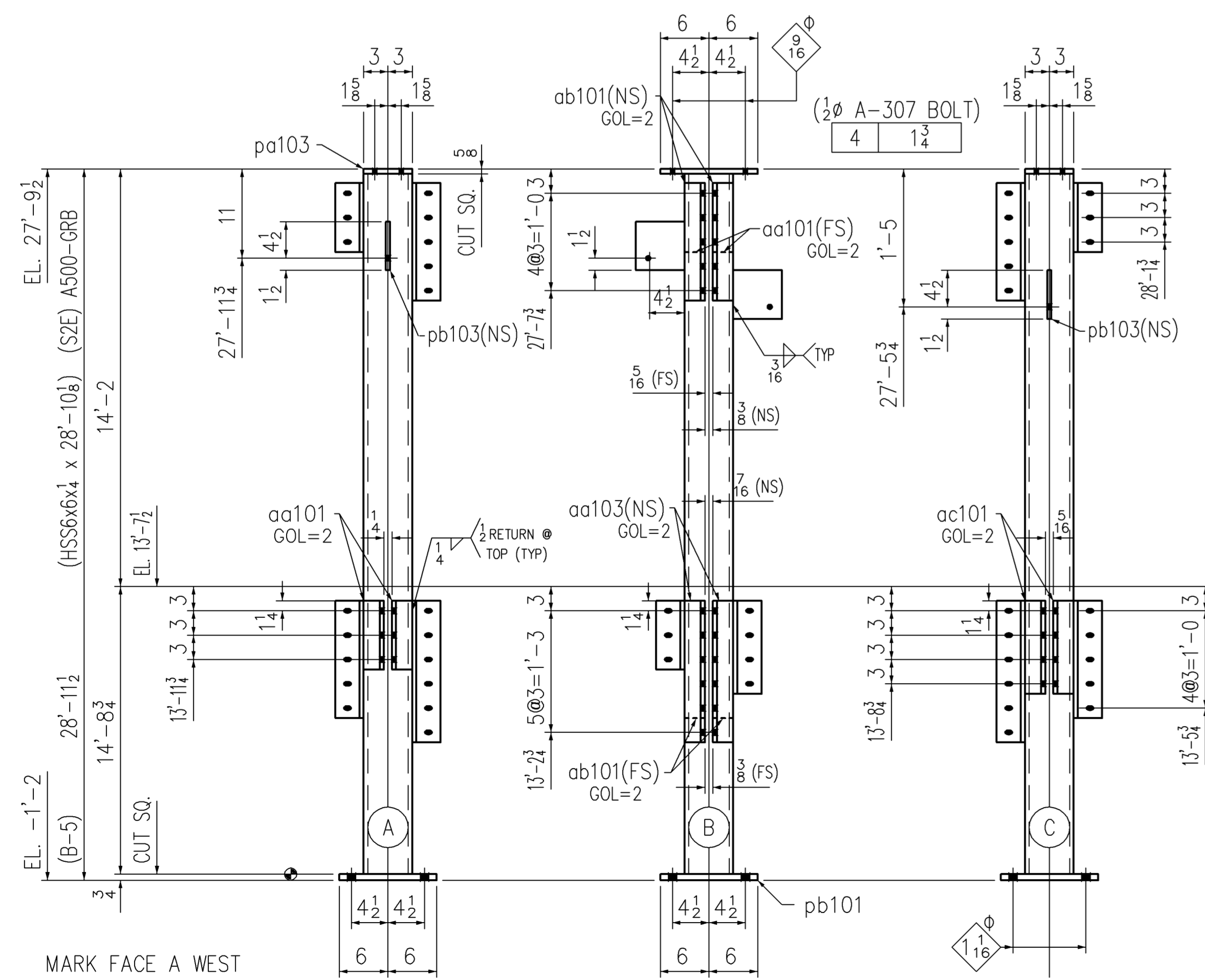


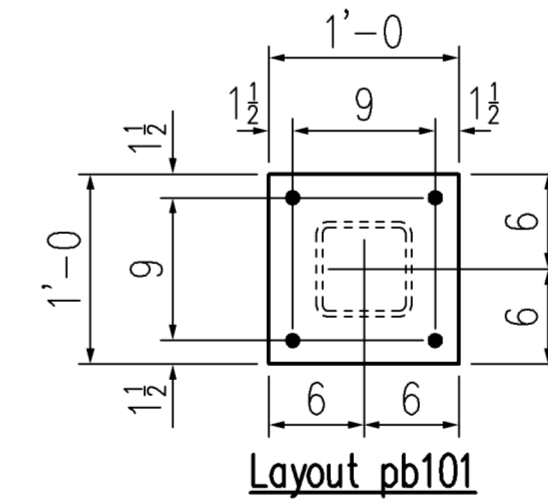
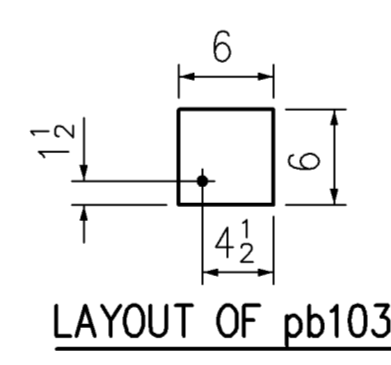
ONE - MK: 103A



ONE - MK: 103C



ONE - MK: 103B



SHOP BILL							
SHIP MK.	SUB MK.	QTY.	DESCRIPTION	FT.	IN.	REMARKS	WEIGHT
103A		ONE	HSS 6x6x4	10	4 1/2	A500-GRB(S2E)	198
	pa102	ONE	PL 3/8 x 6	1	0		13
	pb101	ONE	PL 3/4 x 12	1	0		31
103B		ONE	HSS 6x6x4	28	10 1/8	A500-GRB(S2E)	548
	pa103	ONE	PL 5/8 x 6	1	0		13
	pb101	ONE	PL				31
	pb103	2	PL 1/2 x 6	0	6		10
	aa101	4	L 3 1/2 x 2 1/2 x 5/16	0	8 1/2		17
	ab101	4	L 3 1/2 x 2 1/2 x 5/16	1	2 1/2		29
	ac101	2	L 3 1/2 x 2 1/2 x 5/16	0	11 1/2		12
	aa103	2	L 3 1/2 x 2 1/2 x 5/16	1	5 1/2		18
103C		ONE	HSS 6x6x4	29	5 3/4	A500-GRB(S1E)	560
	pa103	ONE	PL				13
	pb101	ONE	PL				31
	pb103	2	PL				10
	ac101	6	L				35
	aa101	4	L				17
	ab101	2	L				15

Column Sample-2

CyberSTEEL
Detailing Inc.
1104 Green Tee Lane PO Box 7911 Rocky Mount, NC 27804
Phone 255.813-3911 Fax 252.977.1425